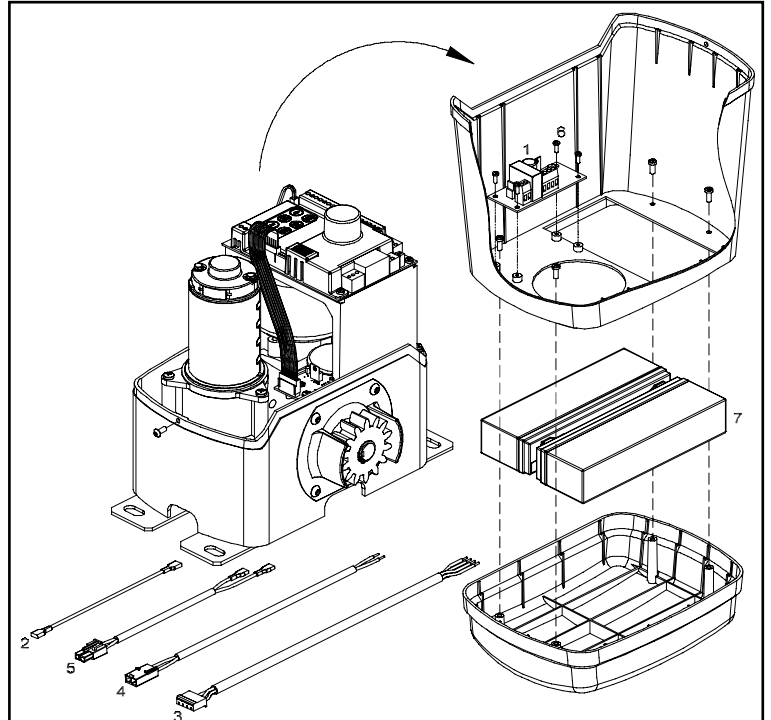


EasySlider V24 Battery Back Up Module

Thank you for purchasing the battery back up module for the ATA EasySlider V24 sliding gate opener. Please read these instructions thoroughly before proceeding with installation.

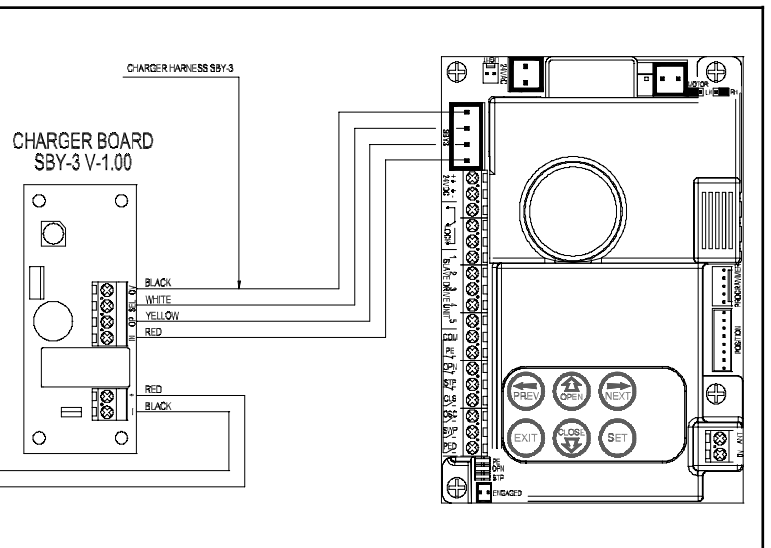
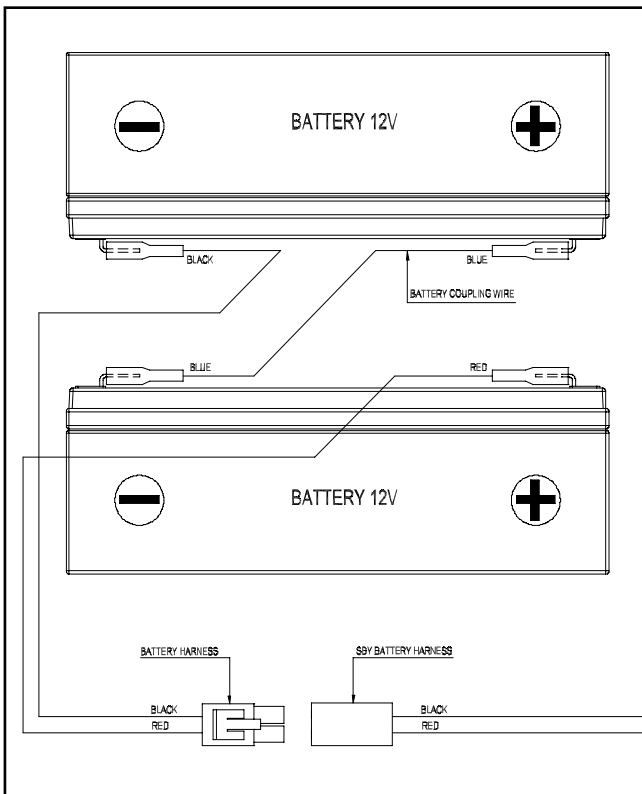
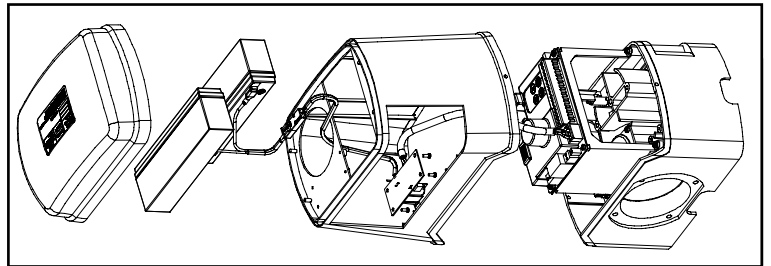
Installation

1. Place batteries with like terminals (+ to +) facing each other. Make sure that unshielded terminals do not make contact with each other.
2. Connect blue battery coupling wire (2) between **positive (+)** terminal of one battery and **negative (-)** terminal of the other battery.
3. Connect battery harness (5) to the other battery terminals. Make sure **black** goes to **negative (-)** terminal and **red** goes to **positive (+)** terminal.
4. Remove top cover of drive unit and place upside down.
5. Remove battery compartment lid.
6. Place batteries in compartment, feed battery harness through round hole and replace screws.
7. Connect SBY-3 battery harness (4) to the two pin terminal block. Make sure **black** goes to **negative (-)** terminal and **red** goes to **positive (+)** terminal.
8. Connect SBY-3 charger harness (3) to the four pin terminal block as per the diagram below.
9. Connect battery harness and SBY-3 battery harness.
10. Secure SBY-3 charger board to underside of top cover with M3x8 taptite screws.
11. Connect charger harness socket to master control board.
12. Refer to EasySlider instructions for set up procedure.



Kit Contents

- | | |
|----------------------------------|----------------------------|
| 1. SBY-3 Battery Charger Module. | 4. SBY-3 Battery Harness. |
| 2. Battery Coupling Wire. | 5. Battery Harness. |
| 3. SBY-3 Charger Harness. | 6. M3x8 Taptite Screw (x4) |



AUTOMATIC TECHNOLOGY AUSTRALIA PTY LTD

17-19 Advantage Rd, Highett, Victoria, Australia 3190
 Tel: +61 3 9532 2788 Fax: +61 3 9532 2799
 Web: www.ata-aust.com.au Email: sales@ata-aust.com.au