

# iS300 Kit

24 Volt motor, Suitable for gates up to 3 metres and 300Kg

## SWING GATE OPENERS



- ) Uses Elsema's MC card with Eclipse® operating system
- ) Ultra quiet operation yet powerful
- ) Die-cast Aluminium motor cover for great durability.
- ) Mechanical stopper built in the motor for added protection. No stoppers required on your driveway.
- ) Battery backup (iS300D E7)
- ) Waterproof cover design
- ) Soft start and soft stop
- ) Easy installation



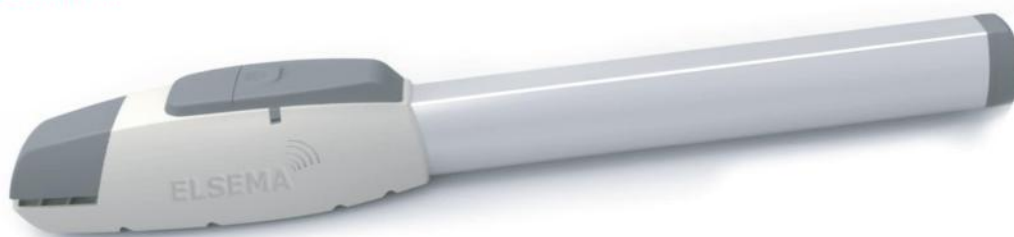
Die-cast aluminum cover. Maximum protection against environment



Easy manual release located on the top side of the motor



Strong and reliable worm shaft with  $\varnothing$  18mm spherical section



+



=

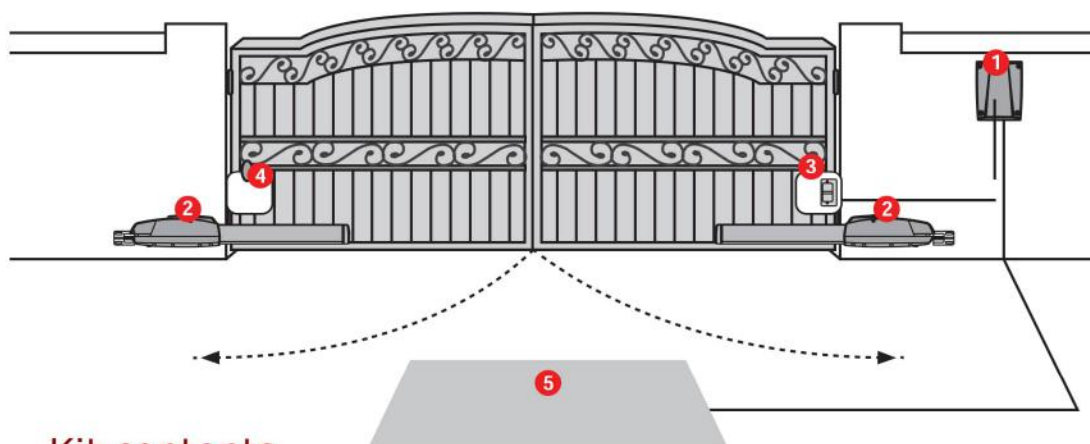


**24 VOLTS HEAVY DUTY  
GEAR MOTOR**

## TECHNICAL DATA

Power supply	240 Volts AC
Motor voltage	24 Volts DC
Max gate weight	300kg
Max gate length	3 metres
Peak thrust	3000N
Operation stroke	350mm
Motor speed	25.5mm/sec
Typical gate opening time	10-15sec
Duty cycle	20%
Operating temperature	-20°C~50°C

## Typical installation



- 1 Intelligent control box
- 2 iS300 motor
- 3 PE1500 photo electric beam
- 4 Reflector for PE1500
- 5 Vehicle detector

## Kit contents



Intelligent control box with built-in receiver.

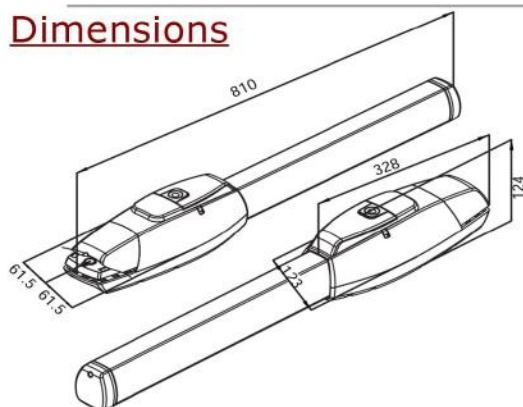


iS300 dual swing motors with built-in stopper



2 x Keyring remotes with frequency hopping

## Dimensions



## Ordering Code

PART NUMBERS	DESCRIPTION
iS300D	Dual swing motor kit
iS300	Single swing motor kit
E7	*Optional battery backup kit

\*Please specify battery backup option when ordering

## Optional Accessories



### PentaCODE® Keypad

Wireless keypad compatible with Pentacode receivers



### GSM Gate Opener

Open your gate with your mobile phone for free!



### Locking Actuator

- ) 12 Volts DC
- ) 50mm Stroke
- ) 20mm Stainless Steel Pin



### Backup Batteries

24 Volt, 7Ah rechargeable lead acid battery



### Vehicle Detector

- ) 12, 24 or 240 Volts
- ) 1 or 2 loops
- ) Medium or high sensitivity



### Flashing Lights

- ) 12 or 24 Volts DC
- ) Red, Blue & Amber
- ) 90 Flashes \ min



Long range reflector type photo electric beam