



Affordable Reliable Service

ABN 27 106 103 315

www.aggdoors.com.au

enquiries@aggdoors.com.au

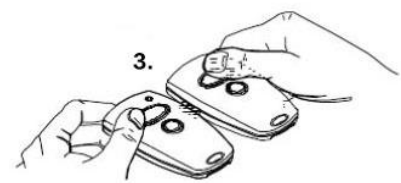
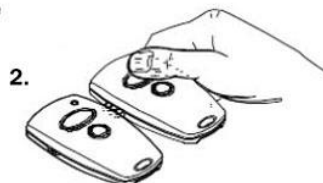
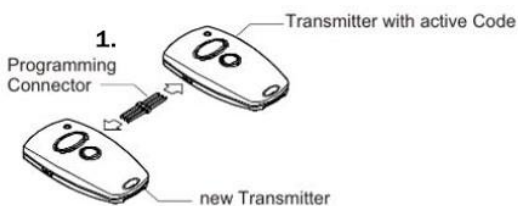
(03) 8789 1342



Genuine D321

Programming of your new Remote control

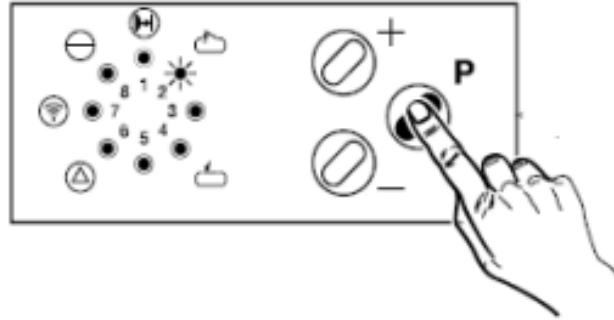
1. Connect your already-programmed remote control to your new remote control with the supplied clip (diagram below).
2. Press a button on your old (or already-programmed) remote control. Keep it pressed down. The LED light on your old remote control illuminates.
3. While keeping the button of your old remote control pressed down, press the button you wish to program on your new remote control. Keep it pressed down. The LED light on your new remote control blinks and then remains lit constantly. Let the buttons go.
4. Repeat this procedure for each button you wish to program.
5. Wait 10 seconds.
6. Your new remote control is programmed.



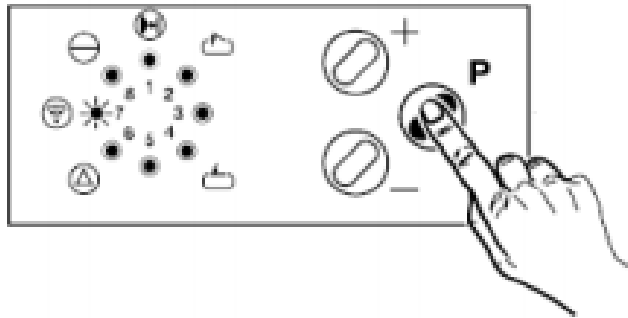
With the receiver

Attention: Only use this programming method if you no longer possess any remote controls that work. This programming method will erase all of your previously-programmed remotes.

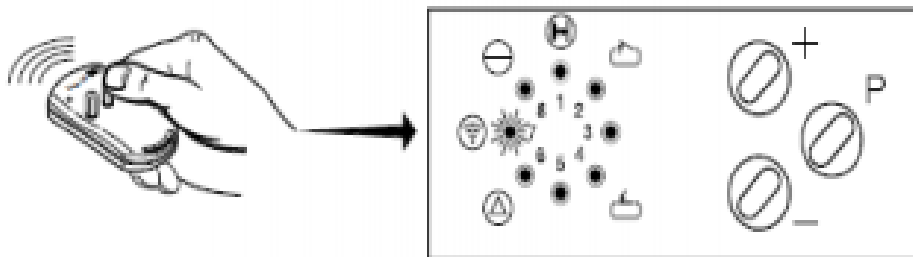
1. Press and hold down the button P until the LED light 2 blinks.



2. Press the button P several times until the LED light 7 blinks.



3. Press the button on your new remote control. The LED 7 blinks more quickly.



4. Press the button P and then let it go. Wait ten seconds.
5. Your new remote control is programmed.

